



materials engineering research  
laboratory

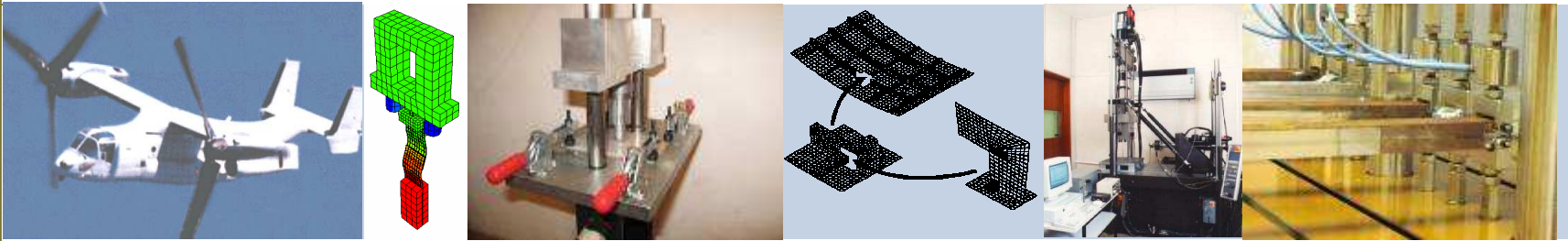
## Aerospace Presentation

MERL a UK High Tech R&D SME

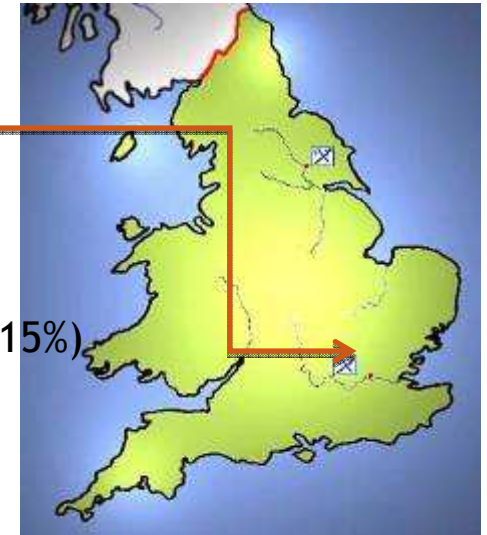
Dr Rod MARTIN, MERL, UK  
rmartin@merl-ltd.co.uk  
+44 (0) 1462 427850

# Materials Engineering Research Laboratory

*International Provider of Complete Innovative Engineering Solutions*



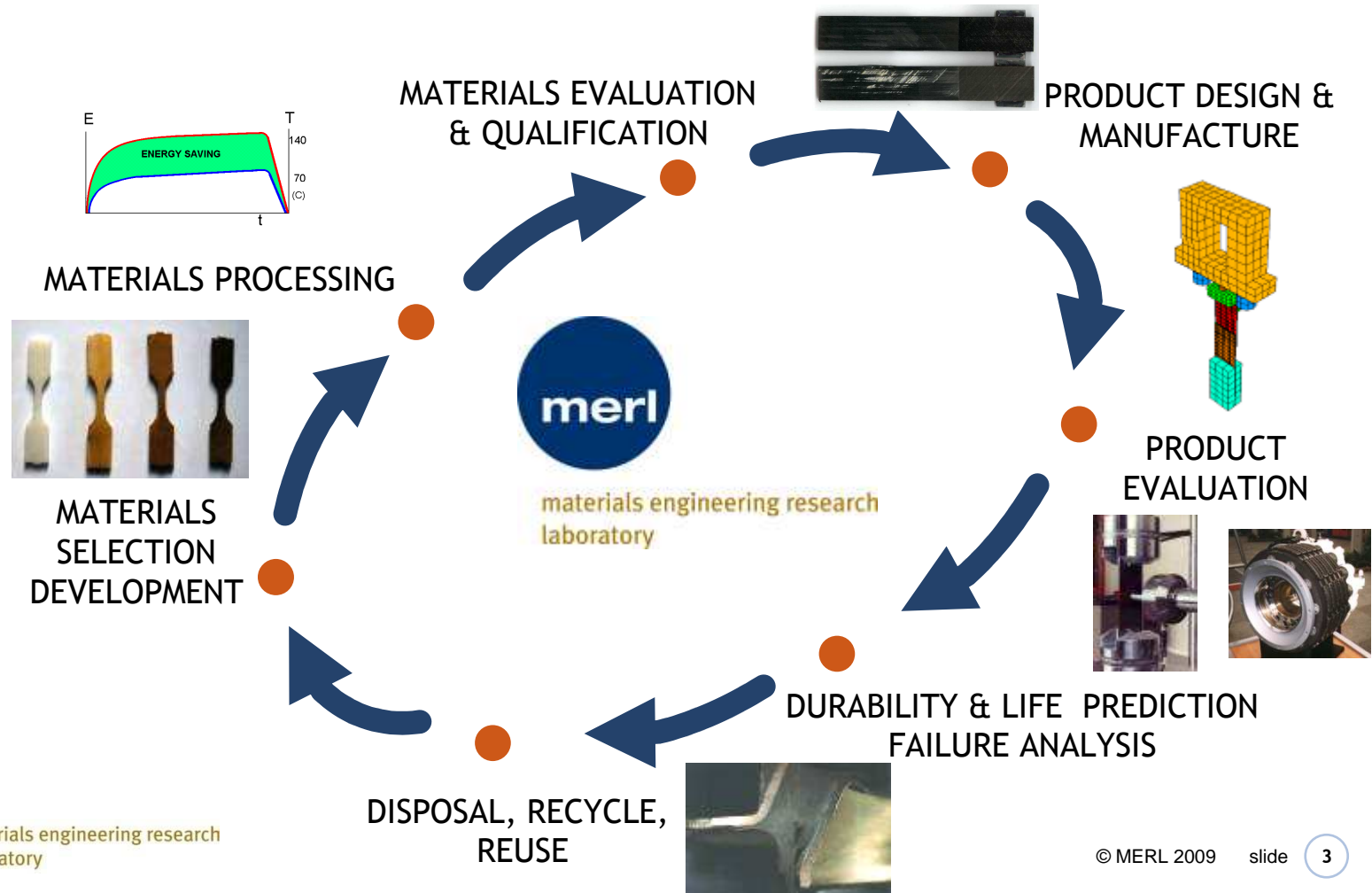
- MERL is an independent, UK, High Tech, R&D, SME (ISO 9001)
- Founded in 1986; 27 employees, turnover ~£2.3M
- Located in Hitchin, Hertfordshire, UK since 2005
- Engineering with composites, elastomers, adhesives
- Aerospace & defence, petrochemicals, land transport,
- Regions - UK (35%), EC (30%), North America (20%), RoW (15%)
- Services - Materials and component testing (mechanical, thermal, environmental), Finite Element Analysis, ...
- EC -  
    FP4/5 RTD Coordinators + Technical Lead  
    FP6 WP leaders in IPs, NoEs  
    FP7: SME Coordinator, Partner in IPs (small/large)



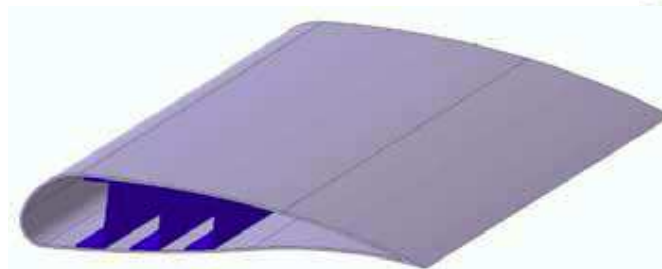
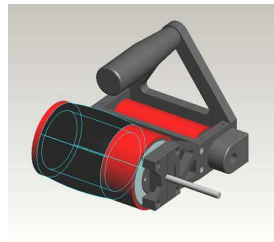
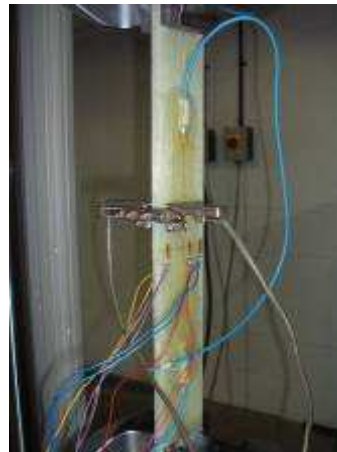
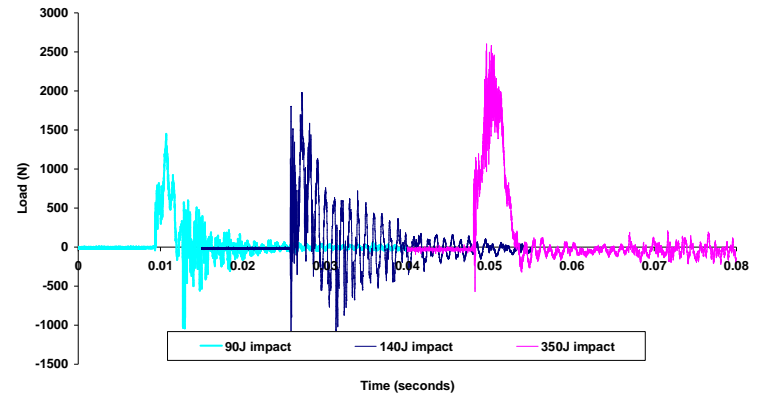
# Materials Engineering Research Laboratory

International Provider of Complete Innovative Engineering Solutions

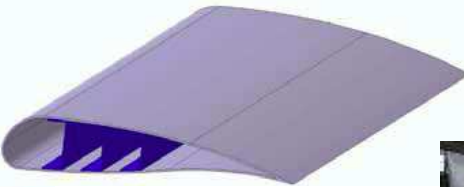
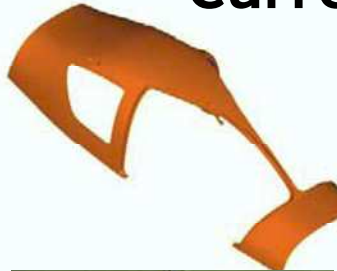
## Complete Engineering Solutions



# Structural and Element Testing & NDE/SHM



# Current Work in Aerospace Structures



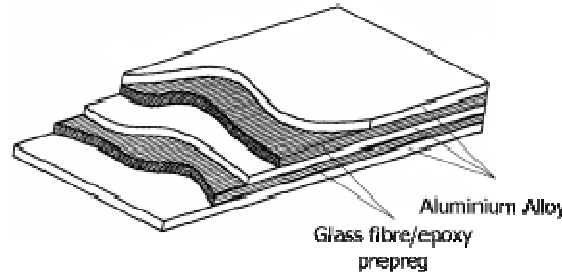
CESAR - FP6 Integrated Project



Tidal/Wind Turbine  
- High Cycle Fatigue



Testing of CCC  
and SiC braking  
materials



Fiber Metal laminate delamination/debond



Various High Cycle rotorcraft  
and Engine related projects

*Current Call:  
SME Specific programmes  
Partner in Cooperation Topics*