

# Jotne EPMT technology

## EXPRESS Data Manager technology and its use

**Jotne EPM Technology**  
**Erik.Ihle@jotne.com**  
**<http://www.jotne.com/epmtech>**



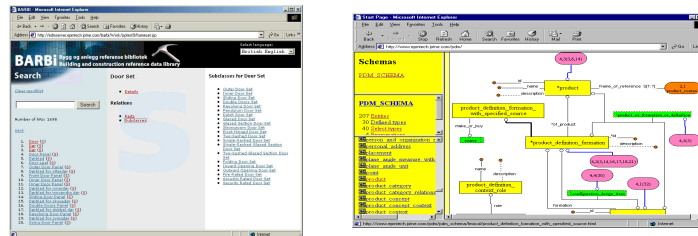
# Jotne AS

- Privately owned limited company
- Three main business areas
  - ➔ Real Estate
  - ➔ Industry and Offshore
  - ➔ Information Technology
- Group Head office in Oslo  
Grenseveien 107
- Jotne Group of companies have a total of 250 employees and an annual turnover in 2008 of 250 mill NOK (about 30 mill €)

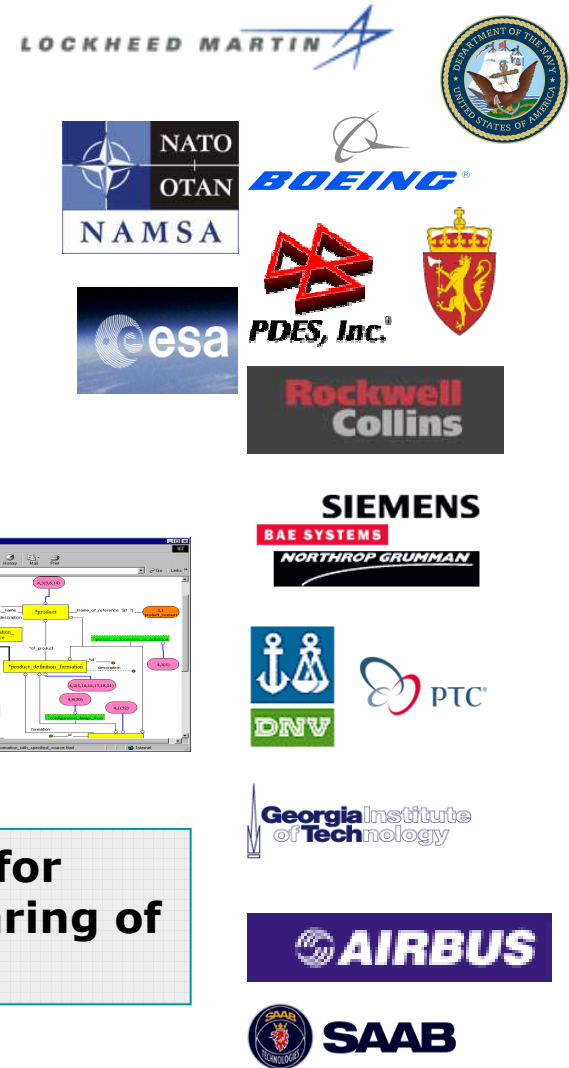


## Leaders in Industrial Data Management using ISO standards

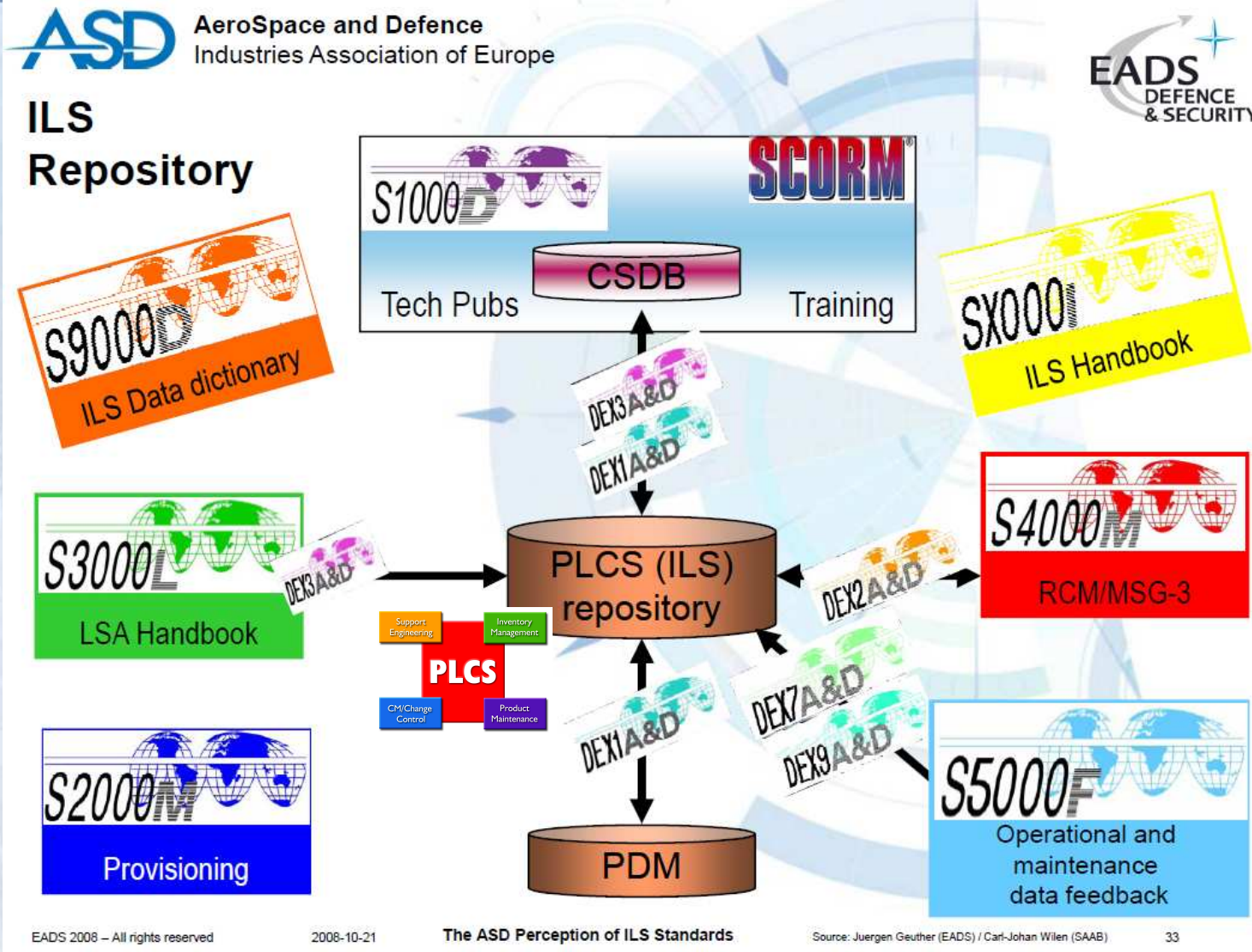
- Data modeling**  
 Create your own data models, or use for viewing and documentation (ISO)
- Database management**  
 The ideal tool for data integration and application development projects
- Rule engine**  
 Validate your data sets, using your own business, knowledge rules or any other sets of rules
- Mapping engine**  
 Convert to and from standard data representations and consolidate data
- Web services**  
 For use in web server applications (thin clients)



## Universal Solutions for Interoperability and Sharing of Product Data



# ASD's vision of ILS information management



EADS 2008 – All rights reserved

2008-10-21

The ASD Perception of ILS Standards

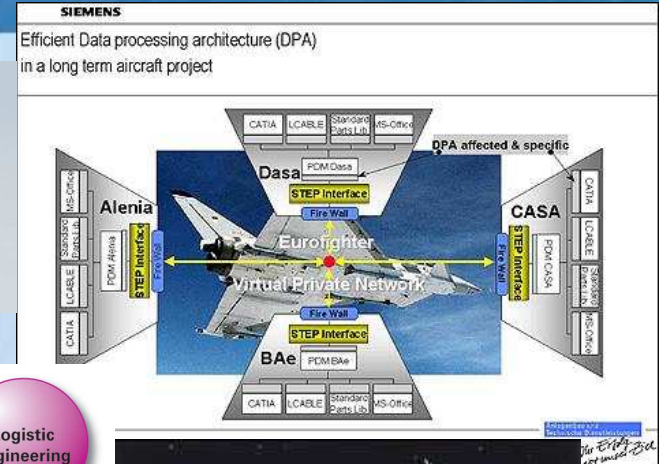
Source: Juergen Geuther (EADS) / Carl-Johan Wilen (SAAB)

33

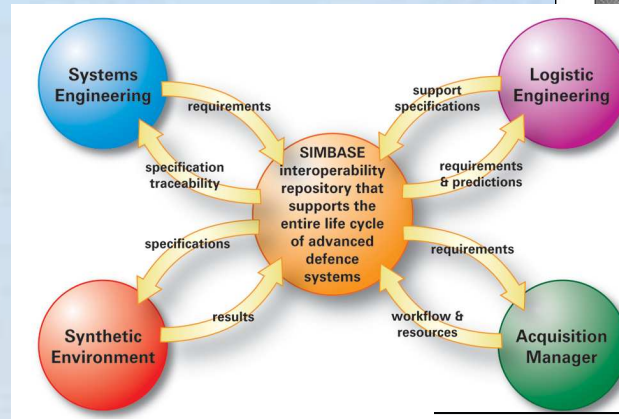


# Jotne business drivers

## ➤ Data exchange



## ➤ Data sharing



## ➤ Information quality

## ➤ Long term data retention

